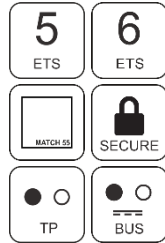
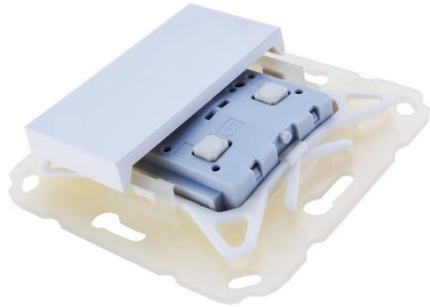


Data sheet

KNX TP Push Button 420 *secure*

KNX TP Push Button with KNX Data Security
For MATCH 55 series



(Art. # 5375 Insert with mounting set and single rocker)
(Art. # 5325 Insert with mounting set and double rocker)

Application area

The KNX TP Push Button 420 *secure* is a push button with integrated bus coupling unit. The device is available with one or two rockers. Each rocker offers two pressure points (up/down).

The device is part of the MATCH 55 push button series. With the supplied installation kit, the push button fits mechanically to numerous switch ranges available on the market with internal dimensions of 55 mm. The soft and quiet push button operation allows the installation in bedrooms and living rooms.

The application offers extensive functions for switching, dimming, shutter, valuator, scene and color control as well as a sequence controller. Each button on a rocker can be configured individually. The flexible operating concept also allows different functions on one button depending on the setting.

The device also contains 10 independent logic or time functions. The device supports KNX Data Security.

Technical Specification

Electrical safety

- Protection (acc. EN 60529): IP20

CE marking according to

- EMC directive 2014 / 30 / EU
- RoHS directive 2011 / 65 / EU
- EN 63044-3: 2018
- EN 50491-5-1: 2010
- EN 50491-5-2: 2010
- EN 50491-5-3: 2010
- EN 61000-6-2: 2019
- EN 61000-6-3: 2007 + A1: 2011
- EN 63000: 2018

Environmental requirements

- Ambient temp. operating: - 5 ... + 45 °C
- Ambient temp. non-op.: - 25 ... + 70 °C
- Rel. humidity (non-condensing): 5 ... 93 %

Mechanical data

- Housing: plastic
- Dimensions wall mounting plate: 71 x 71 mm, for flush box 68 mm
- Rockers for standard frames with internal dimensions 55 x 55 mm
- Installation depth (Bus terminal): 11 mm
- Weight: approx. 15 g

Controls and indicators

- 4 buttons
- 6 LEDs (green), behind the rocker
- KNX programming button with LED (red)

Color

- Rocker white, without label

Power supply

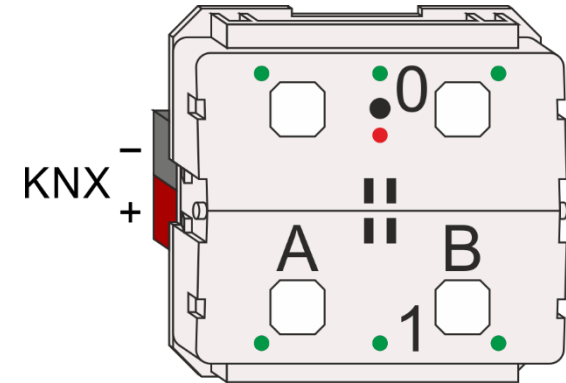
- KNX Bus approx. 3 mA

Connectors

- Connector for KNX bus (red / black)
- Connector for ext. switches / LEDs

Installation Instructions

- The device may be used for permanent interior installations in dry locations.

**WARNING**

- The device must be mounted and commissioned by an authorized electrician.
- The prevailing safety rules must be heeded.
- The device must not be opened.
- For planning and construction of electric installations, the relevant guidelines, regulations and standards of the respective country are to be considered.

ETS6 Database

www.weinzierl.de/en/products/420/ets6

Manual

www.weinzierl.de/en/products/420/manual

CE Declaration

www.weinzierl.de/en/products/420/ce-declaration

www.weinzierl.de



WEINZIERL ENGINEERING GmbH

Achatz 3-4
84508 Burgkirchen an der Alz
GERMANY

Tel.: +49 8677 / 916 36 – 0

E-Mail: info@weinzierl.de

Web: www.weinzierl.de