

Net'n Node 5

ChangeLog

Version 5.4.9

WEINZIERL ENGINEERING GmbH
Achatz 3-4
DE-84508 Burgkirchen an der Alz
Tel.: +49 (0)8677 / 91 636 - 0
E-Mail: info@weinzierl.de
Web: <http://www.weinzierl.de>

ChangeLog of public releases

Release NetnNode-5.4.9 (2025-04-02)

Use kdrive-24.3.2

For >= Free Edition

- [#656] Menu → BAOS: SendParameterBytes not visible
- [#658] Tool FirmwarePackageCreator: Enable it in commercial version (before only in internal version)
- [#661] Tool "Edit Properties": Interpret PDT_UNSIGNED_CHAR as ascii
- [#662] Tool "Edit Properties": Fixed interpretation of PDT_FLOAT
- [kdrive#1412] Fixed BAOS host security: Wrong value in enableServerCounterValidation
- [kdrive#1456] Fixed BAOS host security: Added missing MAC validation in Sync.res
- [kdrive#1458] Fixed KNX data security on KNX RF: Sequence Counter Sync not worked
- [kdrive#1461] Added USB HID infos (vendor id: 0x0E77, product id: 0x011A and 0x011B)
- [kdrive#1463] Added support for new server item "57 -Application Running"

Release NetnNode-5.4.8(2024-10-24)

Use kdrive-24.3.0

For >= Free Edition

- [#633] BaosView: Added support for DPT_251 (RGBW)
- [#634] BaosView: The application crash when try to edit an unsupported DPT
- [#635] BaosView: Fixed edit signed dpt not worked
- [#637] Removing and adding a new keyring causes failure
- [#638] Tool RestartDevice: Added support for FactoryResetWithoutIA(7) and ResetPersistentlyData(8)
- [#640] AccessPortView: TunnelingPort: Show property NetworkInterfaceAddress
- [#641] Fixed: ManagementPort: The keyring project could not set when the device not supported security mgmt (combobox was hide)
- [#642] TelegramView: Local transport layer frames where not encrypted
- [#649] Tool RestartDevice: Added support for send via local transport layer

- [#650] Added support for logging also in a file (enable it with command line option: enable-file-logging)
- [#651] SendTelegramDlg: The representation of "enable/disable send with KNX data security" is not clearly
- [#652] Fixed umlaute (ä, ü, ..) not shown right in Net'n Node about dialog
- [#653] TunnelingPort: Net'n Node sometimes crash when we start a service on a before restarted tunneling device
- [#654] Send BOAS frames: Added support for BAOS SetParameter service
- [kdrive#1412] Implemented BAOS host security (for usb and FT1.2)
- [kdrive#1424] Update USB vendor list (0x135E/0x0325, 0x28C2/0x001E, 0x28C2/0x001F and 0x28C2/0x001C and 0x2A07/0x0003)
- [kdrive#1425] Fixed: ETS Keyring file import: The Key attribute in section Backbone is optional
- [kdrive#1441] Fixed: Max FT1.2 user data bytes and whole buffer size (was to short in the past)
- [kdrive#1451] Added USB HID infos (vendor id: 0x0E77, product id: 0x0118 and 0x0119)
- [kdrive#1453] Added workaround for badly connected SerialDevice (VirtualComPort) could hang application under windows

Release NetnNode-5.4.7(2023-11-09)

Use kdrive-23.2.0

For >= Free Edition

- [tools/kdrive#1388] - Implemented KNX AN210 v2 "TL Style 3 asymmetry removal"
- [tools/kdrive#1395] - Implemented BAOS IP Secure AccessPort
- [tools/kdrive#1397] - Changed FT12_SerialPort enumeration: Now it try also to open the connected FT 1.2 device (before it search only for com ports)
- [tools/kdrive#1399] - Changed TinySerialPort enumeration: Now it try also to open the connected Tiny serial device (before it search only for com ports)
- [tools/kdrive#1402] - TunnelingPort: Read max apdu length via tunneling feature service (when supported) and als fallback via local device mgmt
- [tools/kdrive#1409] - Added interpretation for properties from AN192 v06 Coupler security extensions AS
- [tools/kdrive#1410] - Added interpretation for properties from AN195 v03 Segment Coupler AS
- [tools/kdrive#1411] - Added interpretation for properties from 03_05_01 Resources v01.10.01 AS

- [tools/netnnode#616] - KeyringView: Added support for edit the project name
- [tools/netnnode#620] - BaosView: Added support for new server items (rf domain address and status flags)
- [tools/netnnode#626] - Send BOAS frames: Added support for BAOS Property service
- [tools/netnnode#627] - Fixed: SendDlg for BAOS service SetServerItem: The max data length is 255 instead of 14
- [tools/netnnode#632] - Send dialogs: Added a user description

For >= Professional Edition

- [tools/netnnode#617] - Fixed "ScanLine" tool sometimes show not existing devices

Release NetnNode-5.4.6(2022-11-17)

Use kdrive-22.3.1

For >= Free Edition

- [tools/netnnode#613] - Fixed: Access port scanning sometimes not finished

Release NetnNode-5.4.5(2022-10-04)

Use kdrive-22.3.0

For >= Free Edition

- [tools/kdrive#1359] - UsbPort: Changed read manufacturer id for cEMI interfaces: Use always local device management (before try it via "Device Feature Get")
- [tools/kdrive#1363] - Fixed: Don't accept SEARCH_RESPONSE_EXTENDED with only the requested DIBs (some KNXnet/IP Interfaces with core protocol version 2)
- [tools/kdrive#1370] - Added USB Vendor ids for Gira (vendor id: 0x0E77, product id: 0x2002) and Tecget (vendor id: 0x0E77, product id: 0x0117)
- [tools/netnnode#608] - TelegramView: Added support for go to first, previous, next, last filter match
- [tools/netnnode#609] - Tools: Added support for detect "protected" devices. Secure devices where no valid key is known.
- [tools/netnnode#611] - Fixed "Edit Properties" tool: Wrong property index was shown when a protected property exist in the object

For >= Professional Edition

- [tools/kdrive#1366] - RoutingPort: Added support for AN 183/16 v03 IP System Broadcast
- [tools/netnnode#593] - Fixed: Services over local transport layer no more worked with Rf interfaces (since Net'n Node 5.3)
- [tools/netnnode#600] - Changed store and load the user port properties
- [tools/netnnode#605] - Send ManagementServices Dialog: Added services A_DomainAddressSerialNumber_Write (for IP) and A_DomainAddressSerialNumber_Response (for IP) (AN 183)
- [tools/netnnode#607] - Fixed: Local Services don't work anymore after local property scan (since Net'n Node 5.4.0)

Release NetnNode-5.4.1(2022-03-07)

Use kdrive-22.1.1

- [tools/kdrive#1354] - Fixed: Services over local transport layer no more worked with Rf interfaces (since kdrive-21.3.0)

Release NetnNode-5.4.0(2022-02-23)

Use kdrive-22.1.0

For >= Free Edition

- [tools/netnnode#518] - Implemented knx data security
- [tools/netnnode#580] - TelegramInterpreter: Implemented interpretation for security application layer
- [tools/netnnode#584] - Add an empty Keyring via a button in the KeyringView
- [tools/netnnode#585] - KeyringView: Added support for add/remove devices, interfaces and group addresses
- [tools/netnnode#588] - Changed usb baos detections for secure devices
- [tools/kdrive#1350] - KNXnet/IP via UDP: Fixed missing TUNNELING_ACK when a TUNNELING_FEATURE_INFO or TUNNELING_FEATURE_RESPONSE received.
- [tools/kdrive#1349] - Changed usb baos detections: PID_DEVICE_INFO via M_Propy is not supported for secure devices. So we check only the user property PID_BAOS_PROTOCOL_VERSION.
- [tools/kdrive#1339] - FT 1.2 + EMI2: Wait for device restart

For >= Professional Edition

- [tools/netnnode#590] - Send ManagementServices Dialog: Added support for "long long frames" for extended property and memory services (like A_PropertyExtValue_Write)
- [tools/netnnode#591] - Fixed Scripting: Net'n Node crash when for a user connector (like sequencer) receive was called

Release NetnNode-5.3.0(2021-07-07)**For >= Free Edition**

- [tools/netnnode#540] - Create import dialog for importing and showing ETS keyring data
- [tools/netnnode#558] - Updated Manufacturer names
- [tools/netnnode#572] - Added support for choose a keyring project in the access port settings dialog
- [tools/netnnode#575] - Fixed: BAOS View Scans only 750 datapoints

Release NetnNode-5.2.3(2020-10-07)**For >= Free Edition**

- [tools/netnnode#147] - Tool "Edit Properties": Interpret PID_LOAD_STATE and PID_RUN_STATE
- [tools/netnnode#524] - Added support for Secure IP Tunneling
- [tools/netnnode#551] - Added support for Secure IP Routing
- [tools/netnnode#555] - Add new USB Vendor Id VID 0x16DE PID 0x008E

For >= Professional Edition

- [tools/netnnode#491] - Edit Memory Dialog: Added support for extended memory services

Release NetnNode-5.2.2(2018-08-09)**For >= Free Edition**

- [NETNNODE-391] - "Edit Properties" tool: Added interpret values of type PDT_CHAR as characters
- [NETNNODE-434] - "Device State" tool: Update device state information after unload operation was successfully executed
- [NETNNODE-471] - Fixed "Edit Properties" tool: Authorize Key no more worked with high values

- [NETNNODE-489] - Added interpretation for KNX extended property services like A_PropertyExtValue_Read
- [NETNNODE-490] - Added interpretation for KNX extended memory services like A_MemoryExtended_Read
- [NETNNODE-497] - BAOS view: Show device type for BAOS 773 and BAOS 774
- [NETNNODE-499] - Fixed BAOS view: It was possible that the last datapoints were not shown
- [NETNNODE-508] - Added support for new USB Vendor ID's: 135E/0122, 135E/0252, 135E/0253, 135E/0320, 135E/0322 and 135E/0323
- [NETNNODE-509] - Fixed "Device State" tool: Application could crashed if Unload operation was triggered and no access port was opened

For >= Professional Edition

- [NETNNODE-483] - Fixed "Edit Memory" tool: Write operation no more worked for multiple bytes
- [NETNNODE-487] - "Send ManagementServices" Dialog: Added extended property services like A_PropertyExtValue_Read (AN 163)
- [NETNNODE-488] - "Send ManagementServices Dialog": Added extended memory services like A_MemoryExtended_Read (AN 177)
- [NETNNODE-467] - Fixed: In free version was BAOS ports disabled. (e.g. in create new user port)

Release NetnNode-5.2.1 (2017-12-21)

For >= Free Edition

- [NETNNODE-469] - added BAOS ports to create new option
- [NETNNODE-470] - fixed: Bus connected server item has always shown not connected after reading server items

Release NetnNode-5.2.0 (2017-07-06)

For >= Free Edition

- [NETNNODE-49] - GroupValueWrite Date and Time Dialogs show current Date and Time as default values
- [NETNNODE-80] - TelegramInterpreter: In AI-Data, show for float GroupValue telegrams the additional data as float values
- [NETNNODE-139] - Tool "Device State": Added possibility to set the load and run states

- [NETNNODE-186] - Tool Restart: Added support for Restart Type 1
- [NETNNODE-277] - Added support for BAOS USB Port
- [NETNNODE-325] - Added Export functionality → Telegram Lists can now be exported into '.txt' and '.csv' files
- [NETNNODE-347] - BAOS View shows line still with grey foreground color(not updated), if value was sent via Send KNX
- [NETNNODE-348] - Individual Address Write(in different 'Tools') checks now if new Individual Address is free
- [NETNNODE-351] - Switch LED Tool → removed connectionless option(always connection oriented)
- [NETNNODE-379] - Added support for new KNX USB Interfaces
- [NETNNODE-384] - For negative response to PropValRead during EditProperties Scan added error value to continue scan
- [NETNNODE-386] - Disabled read/write Individual address buttons from remote device address widget during scan operation
- [NETNNODE-390] - Net'n Node crashed if no Telegram List was Open and 'Open' was clicked
- [NETNNODE-396] - 'Close' context menu was not shown → TelegramView
- [NETNNODE-398] - Free Version → Couldn't open BAOS Port if KNX Port is open
- [NETNNODE-406] - ServerItemView: adapted Item descriptions(spaces, remove enabled...)
- [NETNNODE-408] - Adapted description for BAOS Datapoint description - show empty description if Description read is not supported
- [NETNNODE-409] - BAOS View → Programming Mode Server Item: show button(for changing programming mode) + led to visualize Programming Mode
- [NETNNODE-411] - Special chars(like š) are now interpreted correctly in about dialog

For >= Professional Edition

- [NETNNODE-127] - Tool "Edit Properties": Added context menu actions for open SendTelegram Dialogs
- [NETNNODE-342] - Added Serial FT1.2 'spy' capability
- [NETNNODE-374] - Send KNX → Local Services dialog can now be closed via 'Esc'
- [NETNNODE-401] - fixed problem with kscript - mtxml import → added Type 'Unhandled' for not supported Parameter Types

Release NetnNode-5.1.3 (2016-03-04)

For >= Free Edition

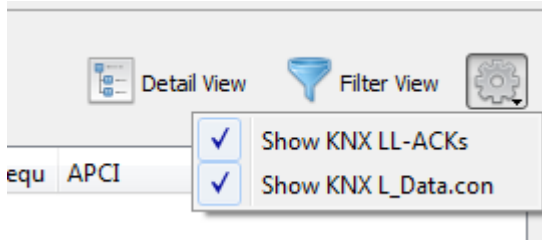
- [\[NETNNODE-195\]](#) - TelegramView Added possibility to hide LinkLayer Ack frames
- [\[NETNNODE-288\]](#) - Extended tool "Scan Range" for scan easy range. Show also the device name and serial number
- [\[NETNNODE-289\]](#) - Extended tool "Device State": Show also the device name
- [\[NETNNODE-293\]](#) - Added in the Knx tools (Edit Properties and Edit Memory) a possibility to authorize with access key
- [\[NETNNODE-297\]](#) - Added in Tool "Edit Properties" an option for read multiple array elements in one request (it's faster)
- [\[NETNNODE-304\]](#) - Added in interface-toolbar button "Delete All" for deleting all user ports
- [\[NETNNODE-308\]](#) - Added option for filter L_Data.con
- [\[NETNNODE-310\]](#) - Fixed Telegram View: Captured telegram number was wrong (start with telegram count) when telegrams were appended to an open view with dropped telegrams
- [\[NETNNODE-311\]](#) - Fixed Telegram View: It was possible that after clear and next telegram capture, previous (old) cached telegrams were shown instead of the new ones
- [\[NETNNODE-312\]](#) - TelegramView: Count in capture also dropped packets
- [\[NETNNODE-316\]](#) - Fixed Float-Converter Tool: Used wrong min and max values
- [\[NETNNODE-317\]](#) - Fixed TelegramView: It was possible to capture new telegrams to an already open existing store
- [\[NETNNODE-322\]](#) - Added support for printing basic documents (telegram view)
- [\[NETNNODE-323\]](#) - Added support for open "Recent files"
- [\[NETNNODE-324\]](#) - Added support for copy telegrams to clipboard
- [\[NETNNODE-332\]](#) - Tool Edit Property: Fixed interpretation of PDT_VERSION
- [\[KDRIVE-1116\]](#) - Added interpretation for additional info
- [\[KDRIVE-1127\]](#) - Fixed meaning of repeat flag in cEMI L_Data.req telegrams. There is a contradiction in the KNX Specification 03_06_03 EMI_IMI v01.03.03 AS. Now we use the same meaning as the ETS used. (1=repeat if error; 0 = do not repeat)

For >= Professional Edition

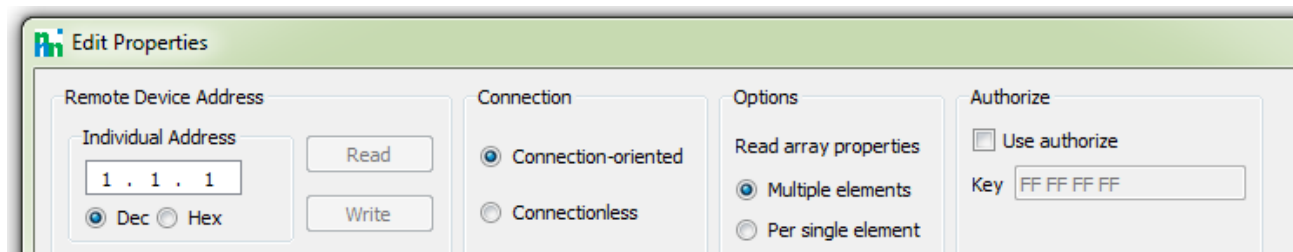
- [\[NETNNODE-298\]](#) - Fixed Tool "Edit Memory": Cancel service (read/write) not (always) worked
- [\[NETNNODE-320\]](#) - Fixed ProductionTool: We must enable vmm access before read it. Only one active range could enabled. So the last enable deactivate the previous.
- [\[NETNNODE-327\]](#) - Added possibility in the Knx Send Dialog to set the repeat flag
- [\[KDRIVE-1120\]](#) - Fixed: Import of choose with multiple when nodes which has the same test value

- [KDRIVE-1121] - Fixed: Choose when dependency calculation with parameter types with number as display value

Screenshots



[NETNNODE-195 / NETNNODE-308] - TelegramView Added possibility to hide LinkLayer Ack frames and L_Data.con frames



[NETNNODE-293 / NETNNODE-297] - Extend Tool "Edit Properties"

Release NetnNode-5.1.2 (2015-10-14)

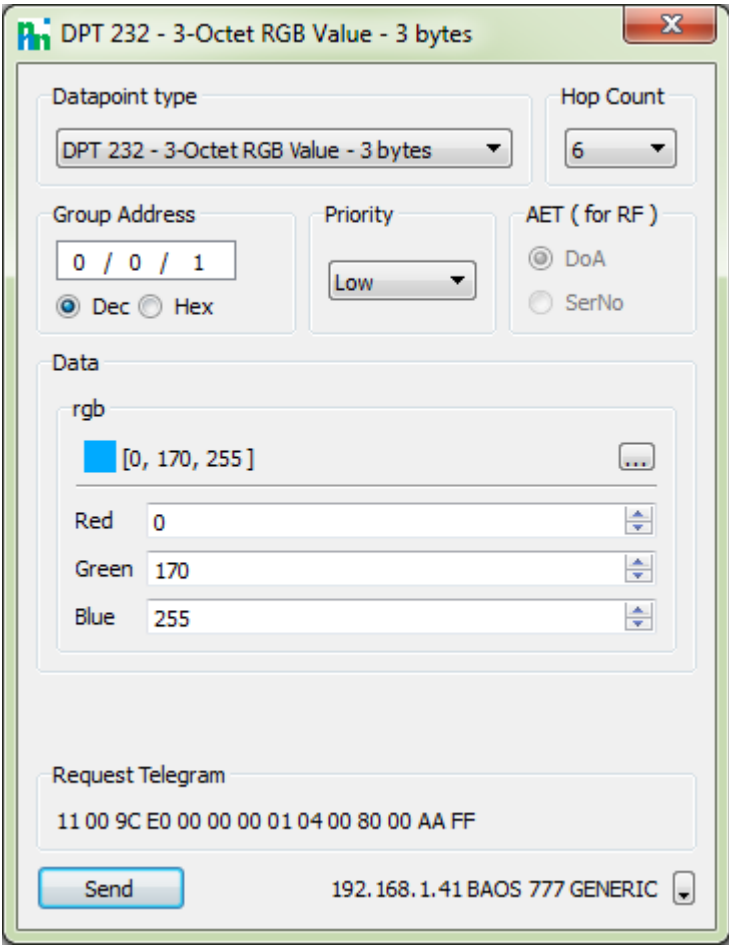
For >= Free Edition

- [NETNNODE-50] - DPT Dialog: Show a Colorpicker for RGB Datapoint Type
- [NETNNODE-243] - BaosView: Show interpreted datapoint values in the datapoint view
- [NETNNODE-254] - TelegramInterpreter: Implemented interpretation for T_Data_Connected and T_Data_Individual frames
- [NETNNODE-256] - Fixed umlaute (ä, ü, ..) not shown right in Net' n Node about dialog
- [NETNNODE-257] - Show bus connection states in the Telegram View (log each change)
- [NETNNODE-258] - When an interface is selected which is not connected to the bus show a warning icon in the tools
- [NETNNODE-259] - Added connector name in the tools to see which connector is connected
- [NETNNODE-264] - Added interpretation for knx coupler specific APCI services like RoutingTableRead
- [NETNNODE-285] - Added detail telegram view for free and professional edition (previously only for Weinzierl internal edition)
- [KDRIVE-1069] - Added support for Weinzierl cEMI FT1.2 interfaces

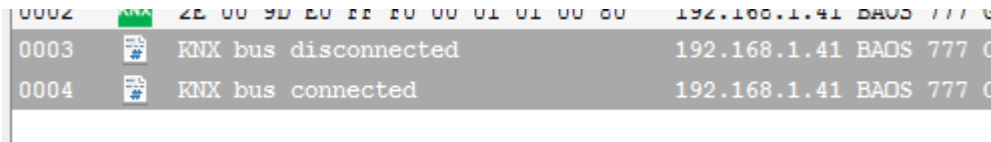
For >= Professional Edition

- [\[NETNNODE-66\]](#) - kscriptView: Implemented System B download (TP)
- [\[NETNNODE-253\]](#) - kscriptView: Support edit parameter values from type TypeText with latin 1 and utf8 encoding
- [\[NETNNODE-273\]](#) - kScriptView: Added support for import multiple devices and application programs
- [\[NETNNODE-284\]](#) - kscriptView: Added Tab Tables and Tab Download
- [\[NETNNODE-114\]](#) - kscriptView: Other small improvment for kScriptView
 - Tab "Dependency": Show for Choose nodes in the parameter values column a button for go to it's parameter ref ref.
 - Tab "Dependency": Column node: show for Choose nodes additional the name of the parameter ref node. (before only Choose)
 - Tab "Dependency": Column node: show for ParameterBlock nodes the name when exists instead of ParameterBlock.
 - Tab "Dependency": Added column TextColumn which shows the text attribute when exist (for ParameterRefRef and ComObjectRefRef from parent ref node)
 - ...

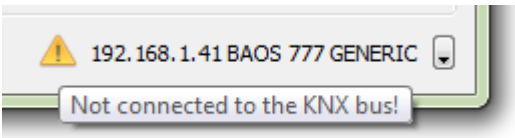
Screenshots



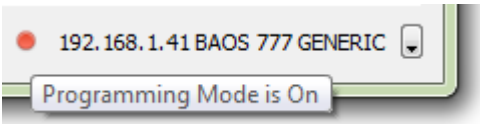
[NETNNODE-50] - DPT Dialog: Show for RGB Datapoint Type a Colorpicker



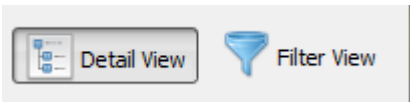
[NETNNODE-257] - Show bus connection states in the Telegram View



[NETNNODE-258 / NETNNODE-259] - Show a warning when interface is not connected



Show programming mode



[NETNNODE-285] - Button for enable/disable detail telegram view

0091	BAOS	F0 01 00 03 00 01	192.168
0092	BAOS	F0 81 00 03 00 01 00 03 02 08 02	192.168
0093	BAOS	F0 01 00 04 00 01	192.168
0094	BAOS	F0 81 00 04 00 01 00 04 02 00 C5	192.168
0095	BAOS	F0 01 00 05 00 01	192.168

Interpretation		
Name		
BAOS	11 Byte(s)	F0 81 00 03 00 01 00 03 02 08 02
MainService	0xF0	BAOS
SubService	0x81	GetServerItem.res
StartItem	3	
NumberOfItems	1	
1. Item	5 Byte(s)	00 03 02 08 02
Id	3	FirmwareVersion
DataLength	2	
Data	2 Byte(s)	08 02

[NETNNODE-285] - Detail telegram view

TelList1*

BAOS View

kScript view

KNX Device Model 07B0 (Twisted Pair System B)

Reload

Path: C:\TMP\Test_mehrere_Geräte.knxproj

Select

Details

Memory

Dependency Tree

Parameters

Group Objects

Tables

Download

Application Programs

Use	Id	Name	ApplId	Ver.	Mask Version
	M-00C5_A-0702-10-1B22	KNX IP Interface 730	0x0702	1.0	TP System 7
	M-00C5_A-0703-10-1EB2	KNX IP Router 750 / 760	0x0703	1.0	IP Router
<input checked="" type="checkbox"/>	M-00C5_A-FF40-10-4941	Demo application sensor	0xFF40	1.0	TP System B
<input type="checkbox"/>	M-00C5_A-FF50-10-F42C	Demo application actuator	0xFF50	1.0	TP System B

Test Sets (for application Demo application sensor)

Defaults

	Device Instance	Address	Name
<div>Load</div>	P-0DC6-0_DI-1	1.1.55	
<div>Load</div>	P-0DC6-0_DI-3	1.1.2	Test 1
<div>Load</div>	P-0DC6-0_DI-4	1.1.3	Test 2

[NETNNODE-273] - kScriptView: Added support for import multiple devices and application programs

Select

Details

Memory

Dependency Tree

Parameters

Group Objects

Tables

Download

Expand All

Collapse All

Node	Text / Function Text	Parameter Value
ChannelIndependentBlock		
GLOBAL_BLOCK	Global parameters	
PAR_CH_COUNT	Channels	2
Memory		
Choose (PAR_CH_COUNT)		
When (>0)		
SENSOR_CH_0	Sensor channel 0	
SENSOR_CH_0_PAR_BLOCK	Sensor channel 0	
SENSOR_CH_0_CH_FUNCTION	Channel Function	Switching (1)
Choose (SENSOR_CH_0_CH_FUNCTION)		
When (1)		
GO_SENSOR_CH_0_SWITCH_ON_OFF	Channel 0 Switch on/off - Channel 0 S...	
GO_SENSOR_CH_0_SWITCH_STATUS	Channel 0 Switch status LED - Channel ...	
When (2)		
GO_SENSOR_CH_0_DIMMER_ON_OFF	Channel 0 Dimming on/off - Channel 0...	
GO_SENSOR_CH_0_DIMMER_CTRL	Channel 0 Dimming control - Channel ...	
GO_SENSOR_CH_0_DIMMER_STATUS	Channel 0 Dimming status LED - Chann...	
When (>1)		
SENSOR_CH_1	Sensor channel 1	
SENSOR_CH_1_PAR_BLOCK	Sensor channel 1	
SENSOR_CH_1_CH_FUNCTION	Channel Function	Dimming (2)
Choose (SENSOR_CH_1_CH_FUNCTION)		<div> <div>Dimming (2)</div> <div>Disabled (0)</div> <div>Switching (1)</div> <div>Dimming (2)</div> </div>
When (1)		
GO_SENSOR_CH_1_SWITCH_ON_OFF	Channel 1 Switch on/off - Channel 1 S...	

[NETNNODE-114] - kScriptView: Dependency view

Memory

Dependency Tree

Parameters

Group Objects

Tables

Download

Object Server

Remote Device Address

Individual Address

15 . 15 . 255

☒ Dec

☐ Hex

Read

Write

Download

Load All

Download

Capture Interfaces

	Telegram	Interface		Service
	29 00 B0 60 FF FF FF F0 00 FE	192.168.1.41...		L-Data.ind
	29 00 B0 60 FF FF FF F0 06 7F D6 01 05 10 01 00	192.168.1.41...		L-Data.ind
	11 00 90 60 00 00 FF FF 00 FE	192.168.1.41...		L-Data.req
	2E 00 B0 60 FF F0 FF FF 00 FE	192.168.1.41...		L-Data.con
	Loading application program 1	Download		Comment
	- Start loading	Download		Comment
	11 00 90 60 00 00 FF FF 0F 43 D7 04 05 10 01 01 00 00 0...	192.168.1.41...		L-Data.req
	2E 00 B0 60 FF F0 FF FF 0F 43 D7 04 05 10 01 01 00 00 0...	192.168.1.41...		L-Data.con
	29 00 B0 60 FF FF FF F0 00 C2	192.168.1.41...		L-Data.ind
	29 00 B0 60 FF FF FF F0 06 43 D6 04 05 10 01 02	192.168.1.41...		L-Data.ind
	11 00 90 60 00 00 FF FF 00 C2	192.168.1.41...		L-Data.req
	2E 00 B0 60 FF F0 FF FF 00 C2	192.168.1.41...		L-Data.con
	- Allocate memory (size=42436), fill it with 0	Download		Comment
	11 00 90 60 00 00 FF FF 0F 47 D7 04 05 10 01 03 0B 00 0...	192.168.1.41...		L-Data.req

[NETNNODE-66] - kScriptView: Download view

Select

Details

Memory

Dependency Tree

Parameters

Group Objects

Tables

Download

Address Table

No	Addr
1	1/2/1
2	1/2/2
3	1/2/3
4	1/2/4
5	1/2/5

Association Table

No	GA	Address	GO	Name
1	1	1/2/1	1	GO_SENSOR_CH_0_SWITCH_ON_OFF
2	2	1/2/2	2	GO_SENSOR_CH_0_SWITCH_STATUS
3	3	1/2/3	11	GO_SENSOR_CH_1_DIMMER_ON_OFF
4	4	1/2/4	12	GO_SENSOR_CH_1_DIMMER_CTRL
5	5	1/2/5	13	GO_SENSOR_CH_1_DIMMER_STATUS

Group Object Table

No	Name
1	GO_SENSOR_CH_0_SWITCH_ON_OFF
2	GO_SENSOR_CH_0_SWITCH_STATUS
3	-
4	-
5	-
6	-
7	-
8	-
9	-
10	-
11	GO_SENSOR_CH_1_DIMMER_ON_OFF
12	GO_SENSOR_CH_1_DIMMER_CTRL
13	GO_SENSOR_CH_1_DIMMER_STATUS

[NETNNODE-284] - kScriptView: Tables view

Release NetnNode-5.1.0 (2015-07-31)

First public release of Net'n Node 5 for free edition

For >= Professional Edition

- [NETNNODE-249] - Added basic production tool based on generated kscript file

Release NetnNode-5.0.2 (2015-07-07)

First public release of Net'n Node 5 for Stack customer