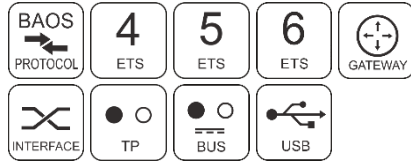


Data sheet

KNX USB Module 322

Interface Module between PC and KNX bus



(Art. # 5257)

Application area

The KNX USB Module 322 is a data interface between a PC or laptop and the KNX installation bus. It can be used as a programming interface for ETS® Software Version 3 (or higher) and supports KNX long frames. Long telegrams enable a faster download to devices that can receive these telegrams.

The LEDs on the module indicate the operating status and communication errors on the bus. The USB connector is galvanic isolated from the KNX bus.

Notes for developers: In addition to the telegram interface via cEMI, the KNX USB Module 322 includes a complete KNX Stack with communication objects and BAOS protocol V2. Thus, the Module offers the possibility to extend devices with USB connection to full KNX devices, which can even be programmed by ETS.

For more information about this solution and available SDKs please contact WEINZIERN.

Technical Specification**Electrical safety**

- To be mounted in a device
- Galvanic isolation: 2.5 kV DC

CE marking according to

- EMC directive 2014 / 30 / EU
- RoHS directive 2011 / 65 / EU
- EN 50491-5-1: 2010
- EN 50491-5-2: 2010
- EN 50491-5-3: 2010
- EN 61000-6-2: 2019
- EN 61000-6-3: 2007 + A1: 2011
- EN 63000: 2018

Environmental requirements

- Ambient temp. operating: - 5 ... + 45 °C
- Ambient temp. non-op.: - 25 ... + 70 °C
- Rel. humidity (non-condensing): 5 ... 93 %

Mechanical data

- Housing: None
- Dimensions: 39.2 x 14.5 x 7.5 mm
- PCB: 1.0 mm
- Weight: Approx. 5 g

Controls and indicators

- 2 LEDs, multicolor

KNX

- Medium TP
- Interface protocol: HID/cEMI
- Max. APDU length: 55
- Object Server: BAOS V2
- Device model: System B

Power supply

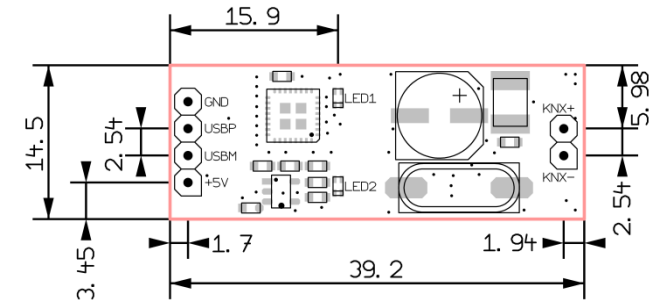
- USB < 10 mA
- KNX < 3 mA

Connectors

- Solder pads for KNX Bus (KNX+ / KNX-), 2.54 mm
- Solder pads for USB (5V, D+, D-, GND), 2.54 mm
- Delivery without pin headers

Dimensions

- To be mounted on a PCB via pin headers (not included)
- Modules with pin headers are available for higher volumes on request.

**Installation Instructions**

- KNX Bus +
- KNX Bus -
- USB GND
- USB Data +
- USB Data -
- USB +5V

ETS6 Datenbank
www.weinzierl.de/de/products/322/ets6



WEINZIERN ENGINEERING GmbH
 Achatz 3-4
 84508 Burgkirchen an der Alz
 GERMANY

Tel.: +49 8677 / 916 36 - 0
 E-Mail: info@weinzierl.de
 Web: www.weinzierl.de